



G131159624 - MicroLogix 1100 on-line edits using AB_ETH or the AB_ETHIP driver resulting in "Assemble edits fails", "Test Edit Fails", or "Online edit resource cannot be obtained from your processor."

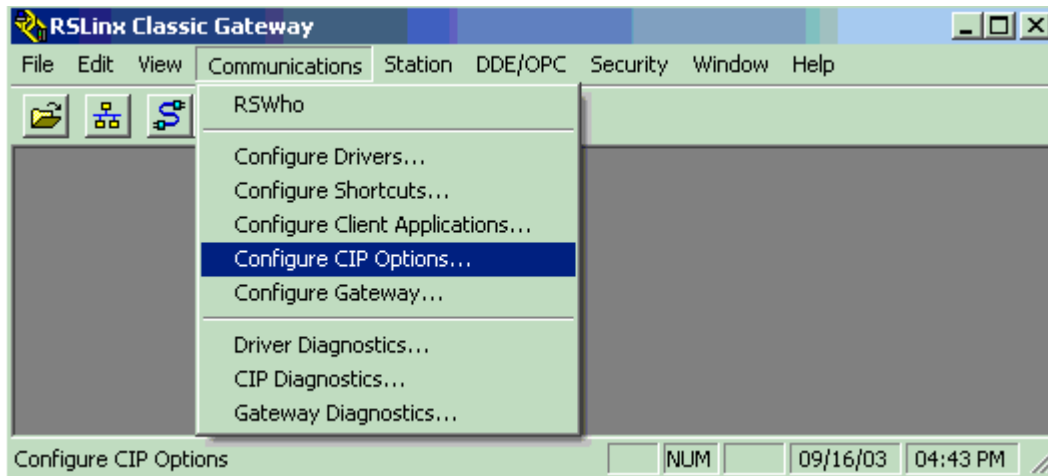
Last Modified: 04/05/2006

General Category:s Programmable Controllers
Product(s): MicroLogix 1100 (1763)
Catalog #: 1763-L16AWA; 1763-L16BBB; 1763-L16BWA
Series / Revision:
Subject
(Keyphrases):
Summary of MicroLogix 1100 online edit errors
Technote
Information:

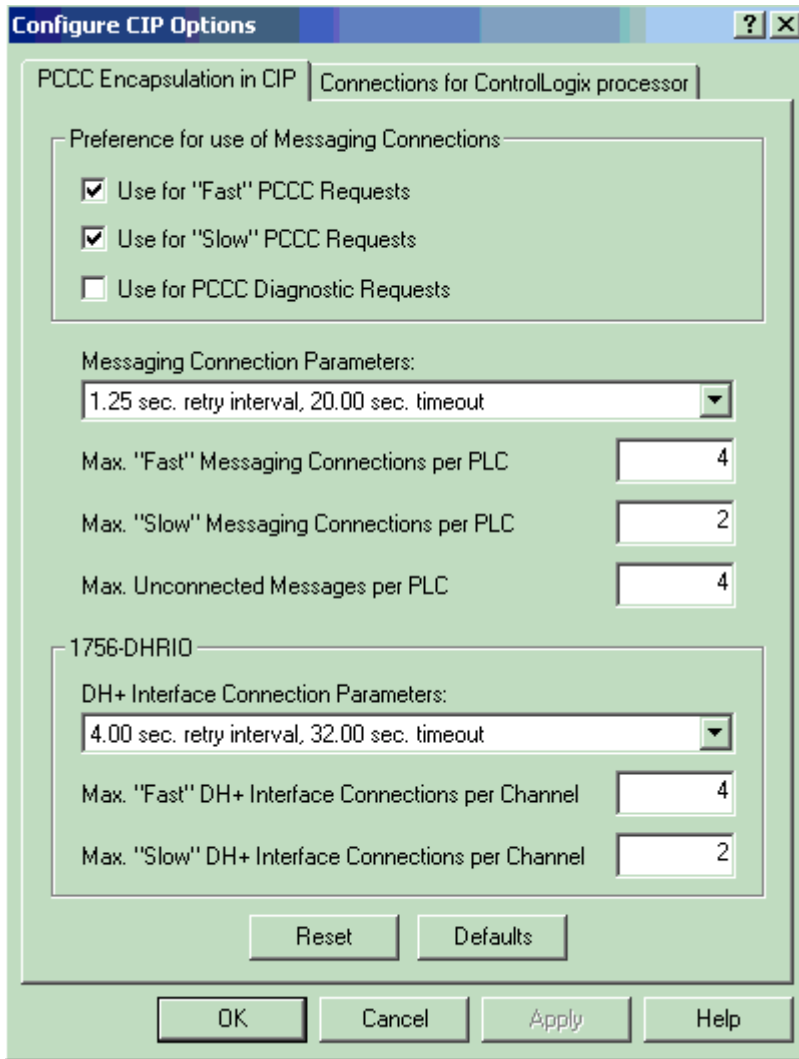
When trying to perform online edits across Ethernet using AB_ETH or the AB_ETHIP driver, the following errors can occur:

- "Assemble edits fails"
- "Test Edit Fails"
- "Online edit resource cannot be obtained from your processor"

The CIP option in RSLinx must be changed as shown below.



Default state in RSLinx.



You must change Max. "Fast" Messaging Connections per PLC / Max. "Slow" Messaging Connections per PLC option to "1".

Use the following RSLinx CIP Option settings for best reliability.

Configure CIP Options [?] [X]

PCCC Encapsulation in CIP | Connections for ControlLogix processor

Preference for use of Messaging Connections:

- Use for "Fast" PCCC Requests
- Use for "Slow" PCCC Requests
- Use for PCCC Diagnostic Requests

Messaging Connection Parameters:

8.00 sec. retry interval, 256.00 sec. timeout

Max. "Fast" Messaging Connections per PLC: 1

Max. "Slow" Messaging Connections per PLC: 1

Max. Unconnected Messages per PLC: 4

1756-DHRIO

DH+ Interface Connection Parameters:

4.00 sec. retry interval, 32.00 sec. timeout

Max. "Fast" DH+ Interface Connections per Channel: 4

Max. "Slow" DH+ Interface Connections per Channel: 2

Reset Defaults

OK Cancel Apply Help

Related Links:

DISCLAIMER

This knowledge base web site is intended to provide general technical information on a particular subject or subjects and is not an exhaustive treatment of such subjects. Accordingly, the information in this web site is not intended to constitute application, design, software or other professional engineering advice or services. Before making any decision or taking any action, which might affect your equipment, you should consult a qualified professional advisor.

ROCKWELL AUTOMATION DOES NOT WARRANT THE COMPLETENESS, TIMELINESS OR ACCURACY OF ANY OF THE DATA CONTAINED IN THIS WEB SITE AND MAY MAKE CHANGES THERETO AT ANY TIME IN ITS SOLE DISCRETION WITHOUT NOTICE. FURTHER, ALL INFORMATION CONVEYED HEREBY IS PROVIDED TO USERS "AS IS." IN NO EVENT SHALL ROCKWELL BE LIABLE FOR ANY DAMAGES OF ANY KIND INCLUDING DIRECT, INDIRECT, INCIDENTAL, CONSEQUENTIAL, LOSS PROFIT OR DAMAGE, EVEN IF ROCKWELL AUTOMATION HAVE BEEN ADVISED ON THE POSSIBILITY OF SUCH DAMAGES.

ROCKWELL AUTOMATION DISCLAIMS ALL WARRANTIES WHETHER EXPRESSED OR IMPLIED IN RESPECT OF THE INFORMATION (INCLUDING SOFTWARE) PROVIDED HEREBY, INCLUDING THE IMPLIED WARRANTIES OF FITNESS FOR A PARTICULAR PURPOSE, MERCHANTABILITY, AND NON-INFRINGEMENT. Note that certain jurisdictions do not countenance the exclusion of implied warranties; thus, this disclaimer may not apply to you.

[Copyright © 2006 Rockwell Automation. All rights reserved.](#)